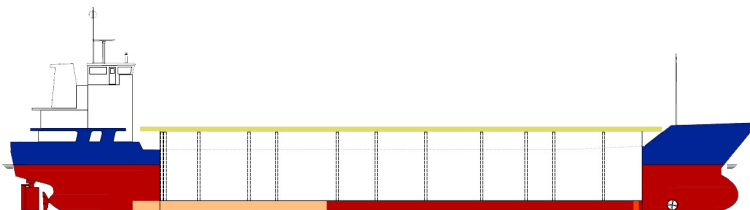


## SHIPS PARTICULARS

## MV MARCEL



Callsign	ONDP	Port of Registry	Antwerp	Flag	Belgian
IMO number	9006318	Official No	KV 350	MMSI Number	20543900

## SHIP SPECIFICATION

Type of vessel	General Dry Cargo Ship – multipurpose single deck – single hold – steel floored box shaped – one cargo-hold grain fitted - two moveable bulkheads		
Builder	PEENE WERFT GMBH, Germany	Year of delivery	1993
Operating area	Europe, N.Africa, Mediterranean	Service Speed	10 knots
Class. Society	Bureau Veritas	P & I	CARINA P&I
Hull & Machinery	BDM		

## TONNAGE/DRAFTS

Gross tonnage	2449	Summer	5,468 m
Net tonnage	1380	Winter	5,353 m
Summer Deadweight	3710	Summer freeboard	3590
Summer displacement	4909	Winter Deadweight	1,445 m
DWCC Summer / Winter	3580 / 3460	Keel to highest fixed point	24,00 m
Light ship	1193	Air draft in full ballast condition	20,60 m

## DIMENSIONS

Length over all	87,90 m	Cargo hold dimension	56,60 m x 10,20 m x 8,10 m
Length between perp.	81,84 m	Hatch Cover Type	Kvaerner Multi-fold Crocodile
Breadth moulded	12,80 m	Box opening hatch	56,60 m
Breadth Extreme	12,83 m	Box opening hatch –storage bulkheads	49,80 m
Depth (moulded)	7,10 m	Hatch Dimensions (L x B)	56,528 x 10,20 m
SWL Tanktop	15,00 T/m <sup>2</sup>	Hold capacity grain	4631 m <sup>3</sup>
SWL Hatch cover	1,53 T/ m <sup>2</sup>	Hold capacity bale	4600 m <sup>3</sup>
Distance from waterline to top of hatch coaming in full ballast condition	5,90 m	Containers 20' (hold/hatch)	108 TEU (hold) – 72 TEU (deck)

## TECHNICAL SPECIFICATIONS

Main Engine	1 x DEUTZ MWM SBV 8M628 – 8 cyl. – gearbox – 850 RPM – 1500 kW
Bow thruster	3 steps, electric-driven, 184 kW – 250 HP
Fuel	MGO
Electrical Ventilation	YES – 6 air changes / hour
IMO Fitted	YES – various classes

## TANK CAPACITY

Ballast Water	1641,90 m <sup>3</sup>
Gas oil	121,20 m <sup>3</sup>
Fresh Water	56,70 m <sup>3</sup>



chartering@boeckmans.be