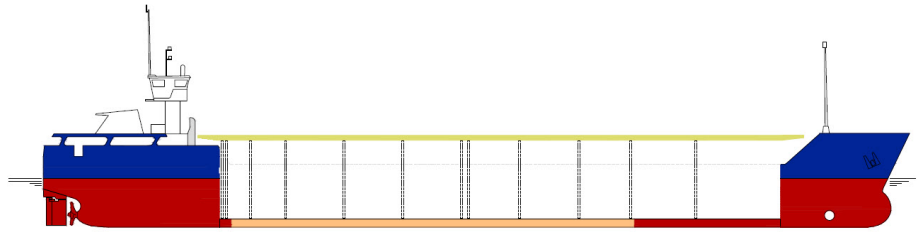


## SHIPS PARTICULARS

## MV MARIE



Callsign	ONJC	Port of Registry	Antwerp	Flag	Belgian
IMO number	9252929	Official No	KV-473	MMSI Number	205724000

SHIP SPECIFICATION			
Type of vessel	General Dry Cargo Ship – single hold Vessel is fitted with two movable bulkheads, steel floored, box shaped.		
Builder	Slovenske Lodenice A.S. 94525 Komarno, Slovakia Republic	Year of delivery	2002
Operating area	Europe, North Africa, Mediterranean, W. Asia	Service Speed	10 knots
Class. Society	Bureau Veritas	P & I	CARINA P&I
Hull & Machinery	BDM		

TONNAGE			
Gross tonnage	2061	Summer	4,956 m
Net tonnage	1161	Winter	4,846 m
Summer Deadweight	2974	Summer freeboard	1,466 m
Summer displacement	4082	Air draft in full ballast cond.:	mast up: 22.00 m mast down: 14.00
DWCC Summer / Winter	2832 / 2732	Keel to highest fixed point	25,2 m
Light ship	1108,09		

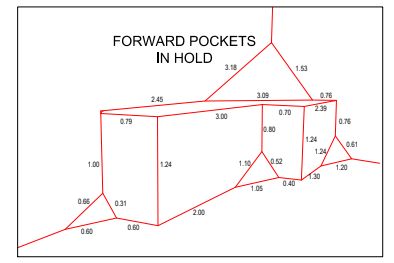
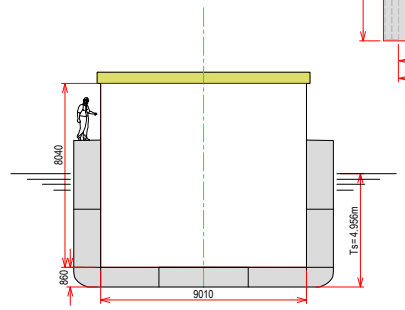
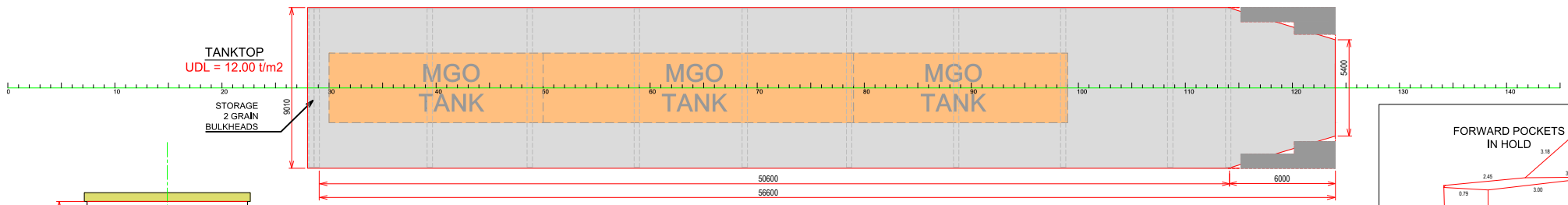
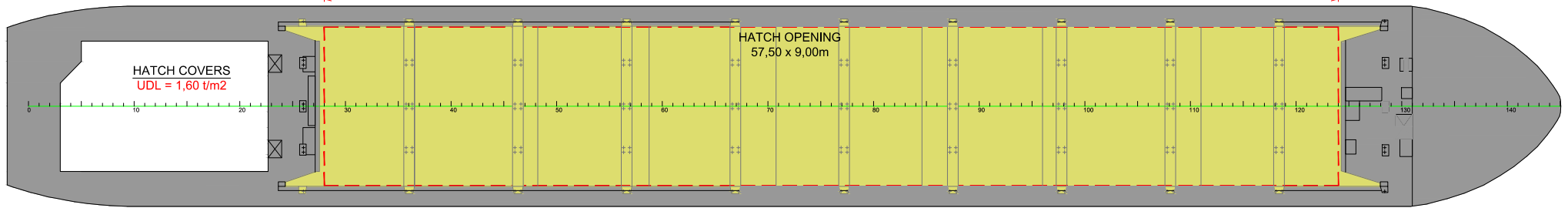
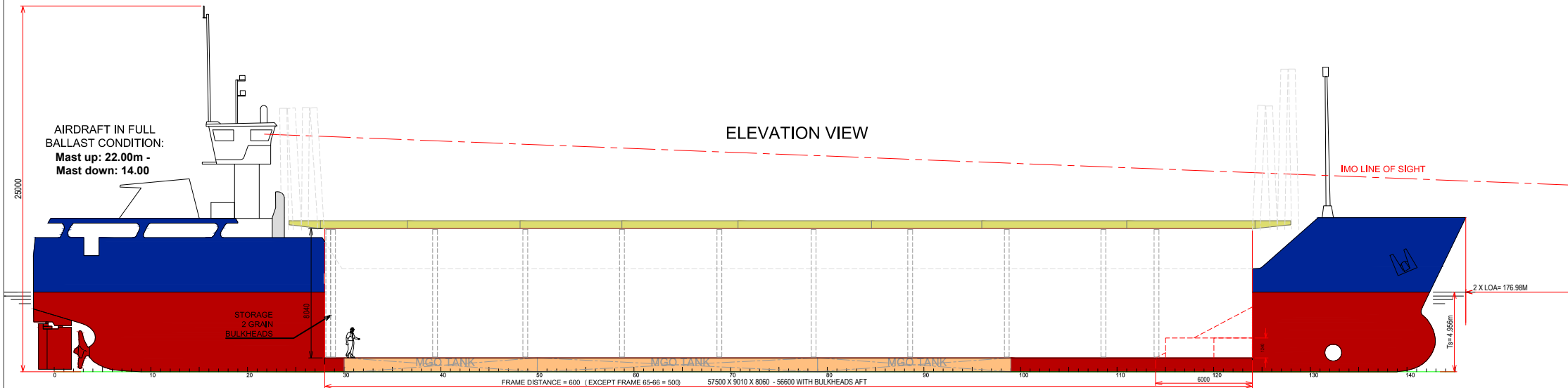
DIMENSIONS			
Length over all	88,47 m	Cargo hold dimension	57,5 m x 9,0 m x 8,04 m
Length between perp.	84,68 m	Hatch Cover Type	Kvaerner Multi-fold crocodile
Breadth moulded	11,35 m	Box opening hatch	57,5 m
Breadth Extreme	11,40 m	Box opening hatch –storage bulkheads	56,6 m
Depth (moulded)	6,422 m	Hatch Dimensions (L x B)	1 hatch 57,5 x 9,0 m
SWL Tanktop	12,0 t/m <sup>2</sup>	Hold capacity grain/bale	4160,7 m <sup>3</sup> / 146,969 cbf
SWL Hatch cover	1,6 t/ m <sup>2</sup>	Containers 20' (hold/hatch)	78/48
Distance from waterline to top of hatch coaming in full ballast condition			5,85 m

TECHNICAL SPECIFICATIONS	
Main Engine	1 x Deutz SBV 6M 628 - 1.125kW
Bowthruster	Jastram, BU-20F - 130 KW
Fuel	MGO
Electrical Ventilation	YES – 6 airchanges/hour
IMO Fitted	YES – various classes

TANK CAPACITY	
Ballast Water	1144,67 m <sup>3</sup>
Gas oil	148,32 m <sup>3</sup>
Fresh Water	23,42 m <sup>3</sup>



# STOWAGE PLAN MV MARIE



**PRINCIPAL PARTICULARS**

LENGTH O.A.	88.49 m	MAIN ENGINE	1 X DEUTZ MWM SBV 6M 628 - 1.125 kW
LENGTH B.P.	84.68 m	BOWTHRUSTER	130 kW
BREADTH MLD.	11.35 m	ELECTRICAL VENTILATION	6 AIRCHANGES/HR
DEPTH MLD.	6.42 m	IMO FITTED	YES - VARIOUS CLASSES
SUMMER DRAFT	4.956 m	SERVICE SPEED	9.5 kn
WINTER DRAFT	4.851 m	MAX UNIFORM LOAD:	
DEADWEIGHT AT SUMMER DRAFT	2.974 t	TANKTOP:	12 t/m <sup>2</sup>
DWCC SUMMER/WINTER	2.832 1/2 732 t	HATCH COVERS:	1.6 t/m <sup>2</sup>
HOLD CAPACITY GRAIN/BALE	4.162 m <sup>3</sup> /146.969 cbft		
CONTAINER CAPACITY: ON DECK	48 TEU		
IN HOLD	78 TEU		
TOTAL	126 TEU		



www.boeckmans.be

All details given in good faith and believed to be correct, but without guarantee