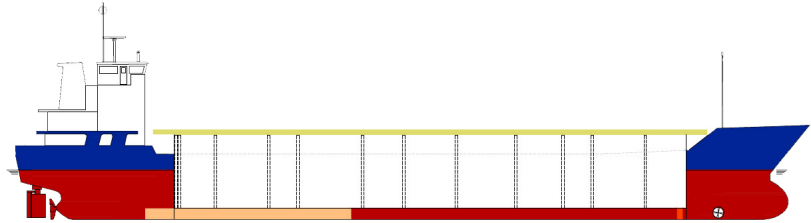


SHIPS PARTICULARS

MV MARCEL



Callsign	ONDP	Port of Registry	Antwerp	Flag	Belgian
IMO number	9006318	Official No	KV 350	MMSI Number	20543900

SHIP SPECIFICATION			
Type of vessel	General Dry Cargo Ship – multipurpose single deck – single hold – steel floored box shaped – one cargo-hold grain fitted - two moveable bulkheads		
Builder	PEENE WERFT GMBH, Germany	Year of delivery	1993
Operating area	Europe, N.Africa, Mediterranean	Service Speed	10 knots
Class. Society	Bureau Veritas	P & I	CARINA P&I
Hull & Machinery	BDM		

TONNAGE/DRAFTS			
Gross tonnage	2449	Summer draft	5,468 m
Net tonnage	1380	Winter draft	5,353 m
Summer Deadweight	3710	Summer freeboard	1,445 m
Summer displacement	4909	Winter Deadweight	3590
DWCC Summer / Winter	3580 / 3460	Keel to highest fixed point	24,00 m
Light ship	1193	Air draft in full ballast condition	20,60 m

DIMENSIONS			
Length over all	87,90 m	Cargo hold dimension	56,60 m x 10,20 m x 8,10 m
Length between perp.	81,84 m	Hatch Cover Type	Kvaerner Multi-fold Crocodile
Breadth moulded	12,80 m	Box opening hatch	56,60 m
Breadth Extreme	12,83 m	Box opening hatch –storage bulkheads	49,80 m
Depth (moulded)	7,10 m	Hatch Dimensions (L x B)	56,528 x 10,20 m
SWL Tanktop	15,00 T/m ²	Hold capacity grain	4631 m ³
SWL Hatch cover	1,53 T/ m ²	Hold capacity bale	4600 m ³
Distance from waterline to top of hatch coaming in full ballast condition	5,90 m	Containers 20' (hold/hatch)	108 TEU (hold) – 72 TEU (deck)

TECHNICAL SPECIFICATIONS	
Main Engine	1 x DEUTZ MWM SBV 8M628 – 8 cyl. – gearbox – 850 RPM – 1500 kW
Bow thruster	3 steps, electric-driven, 184 kW – 250 HP
Fuel	MGO
Electrical Ventilation	YES – 6 air changes / hour
IMO Fitted	YES – various classes

TANK CAPACITY	
Ballast Water	1641,90 m ³
Gas oil	121,20 m ³
Fresh Water	56,70 m ³



chartering@boeckmans.be

All details given in good faith and believed to be correct, but without guarantee